



IST

UCS-i User Control Systems

UCS-i User Control Systems

The UCS-i UV user control systems have been specifically developed to meet your needs

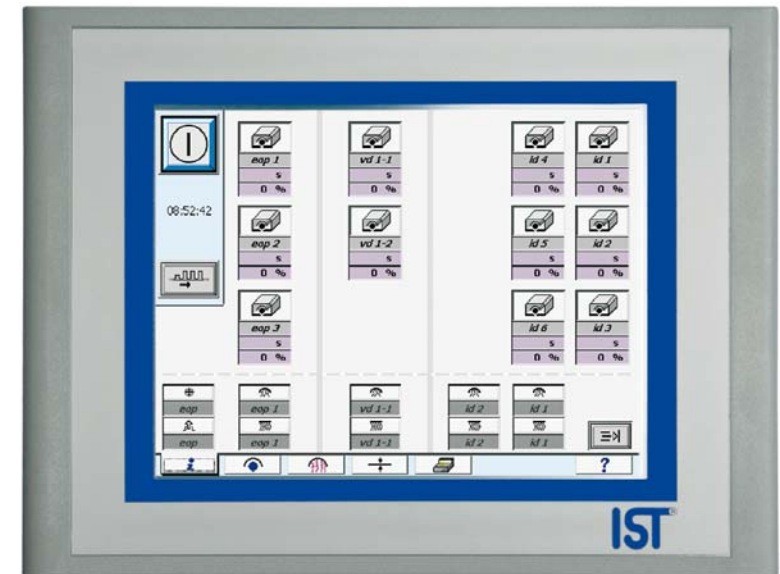
- **Two high performance control systems are available to operate the IST UV systems depending on the different application requirements.**
- **Both systems provide user-friendly, easily understood controls for the UV system.**
- **Clear symbols show all the functions and the most important operational parameters can be recognised immediately.**
- **Due to its compact design the system can be easily integrated in an existing control console or directly into the press.**



UCS-i User Control Systems

With a high resolution colour monitor and large memory the UCS-i touch screens are designed for complex control tasks

- All functions are displayed by easily understood symbols.
- Clearly structured menu using pop-up windows.
- The most important operating parameters such as lamp selection, open/close shutter, run-up, production and cool down can be recognised immediately.
- Multiple units can be adjusted simultaneously.
- Various interfaces for connection to the control systems: Ethernet, PROFIBUS, RS 422 / RS 485, PROFINET, MPI.

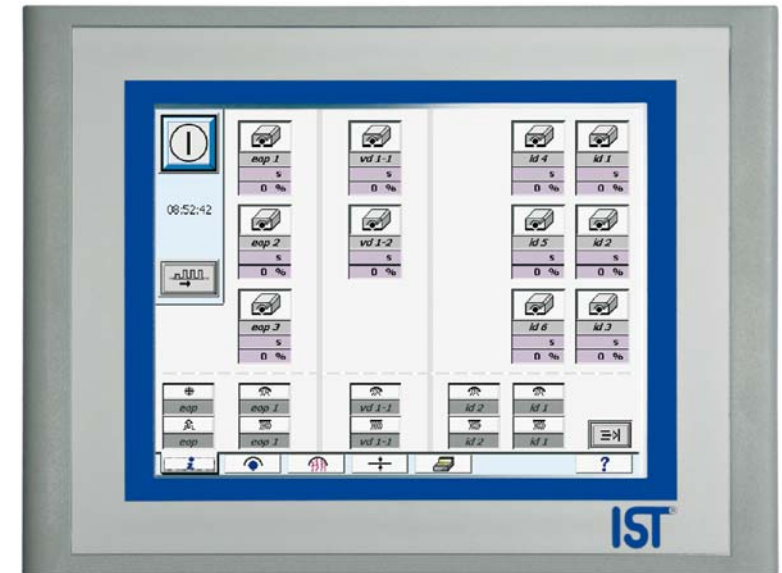


Main menu of the UCS-i Touch Screen

UCS-i User Control Systems

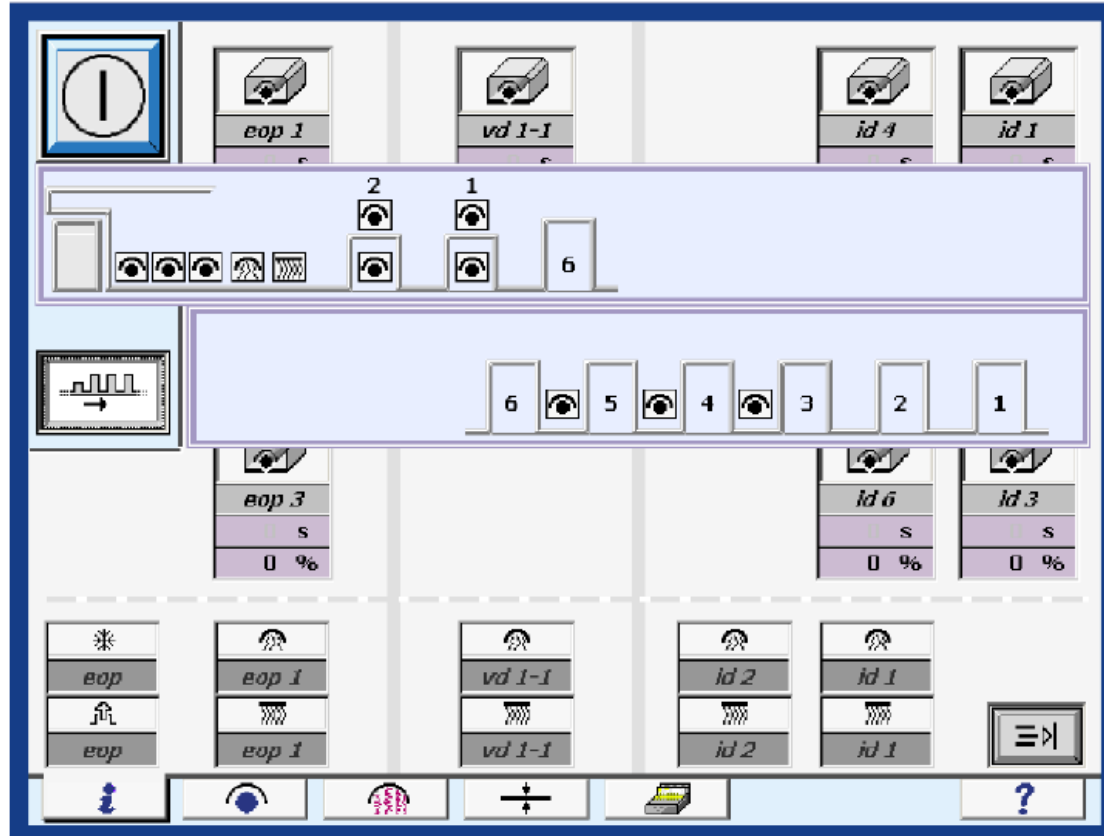
With a high resolution colour monitor and large memory the UCS-i touch screens are designed for complex control tasks

- Data export via USB port.
- The parameters for specific print jobs can be saved and instantly recalled.
- Easy selection of the required language. A wide variety of language options are available.
- Error messages are displayed and stored for later retrieval.
- Help key function provides assistance on all important functions.
- Available at the end of 2008 or on request.



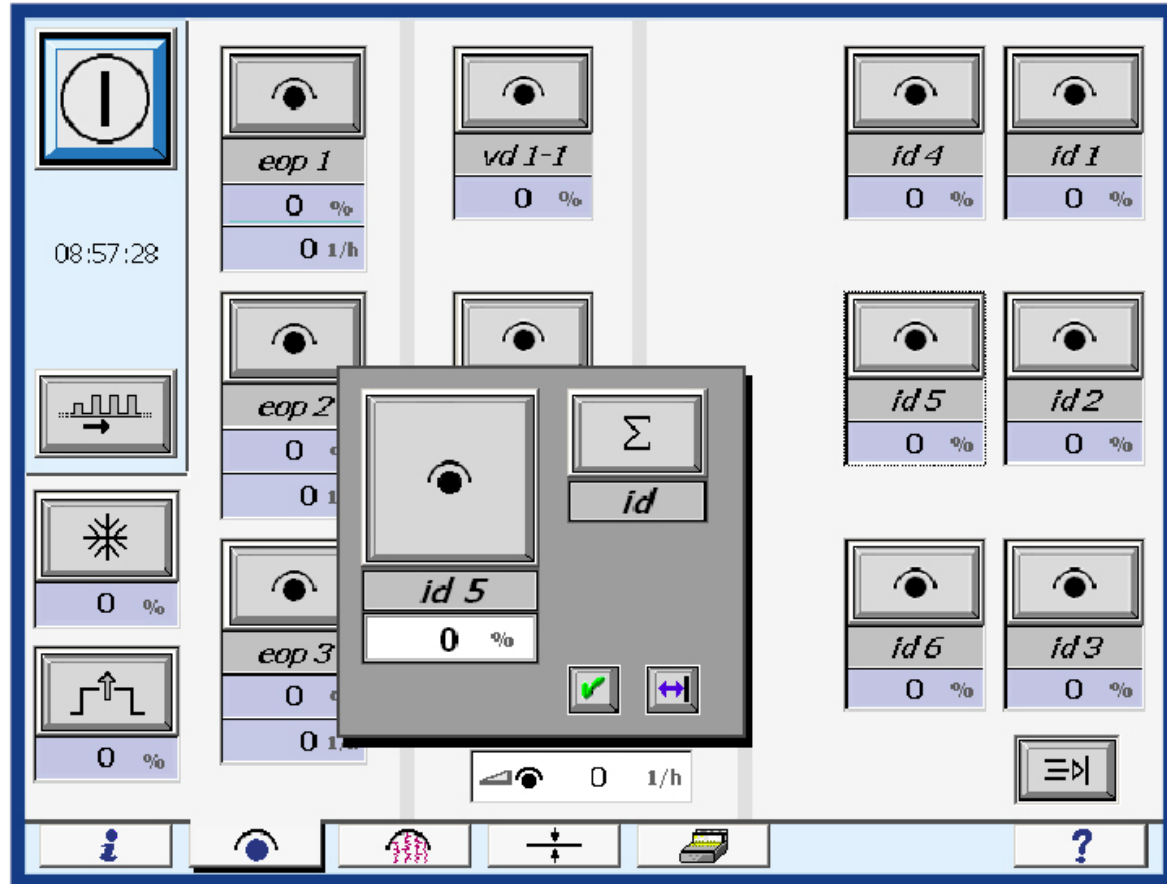
Main menu of the UCS-i Touch Screen

UCS-i User Control Systems



Main menu of the UCS-i touch screen with press diagram displayed

UCS-i User Control Systems



Pre-selection page with pop-up window

help
preselection pop-up

1.2 1.3

1.1 5
6 id

id 2
100 % 3
5000 1/h 4

7 8

1.1 preselection UV-lamp
1.2 preselec. undershielding exhaust air / supply air
1.3 preselection air chiller
2 unit number
3 nominal value
4 speed relation of UV-lamps end of press
5 area takeover
6 area of identification
7 leave data entry
8 move pop-up

≪≡ ≡≫

i ?

Help menu for pre-selection topics